

**FIRE EXTINGUISHERS****INTRODUCTION**

It is the responsibility of each Eastern Washington University (EWU) employee to know the nearest exit(s), the location of the alarm pull stations, and the nearest fire extinguishers. Employees should not use fire extinguishers unless properly trained. Environmental Health and Safety (EH&S) Department will provide fire extinguisher training. Training is required for designated employees when hired and annually thereafter pursuant to WAC 296-800-30025.

It is the responsibility of EWU to make sure all fire extinguishers are left in their designated places and fully charged and that all fire suppression equipment is maintained in good working condition. These tasks will be accomplished through the following plan:

- a. The EWU Facilities Maintenance Department will contract and coordinate contractors for the maintenance of fixed fire suppression, alarm systems and fire extinguishers.
- b. The Facilities Maintenance Department will conduct monthly visual inspections of fire extinguishers in accordance with WAC 296-800-30020 in all main campus buildings and Turnbull.
- c. It is the responsibility of the operators of EWU vehicles and portable equipment to ensure that any fire extinguishers in the vehicle or on the equipment used are maintained and accessible. Contractor Service must be performed annually. Check the tag and confirm last service. If the service tag is more than one year past the tag date, contact the Work Order Desk. ([Fire Extinguishers Brochure](#) )
- d. All employees who become aware of missing, malfunctioning or outdated extinguishers are responsible for submitting a report to the Work Order Desk (Phone 359-2245).



# FIRE EXTINGUISHERS



This tag indicates the extinguisher was serviced August of 2009. The next service will be in one year (August 2010). Until that time the extinguisher service will be valid. In August 2010 a new tag will be placed on the extinguisher indicating it has been serviced.








Check to make sure that the gauge reads in the green

# FIRE EXTINGUISHERS

## An Employee's Guide to Proper Selection and Use of Portable Fire Extinguishers in University Buildings.

**NOTE:** The intent of this guide is that University employees are NOT REQUIRED to fight fires they discover with portable fire extinguishers; but to provide employees with the information needed to use portable fire extinguishers if a small fire situation arises.

### TYPES OF FIRE:


- Class "A" - Involves ordinary combustibles like; wood, paper & cloth 
- Class "B" - Involves flammable & combustible liquids and gases 
- Class "C" - Involves fire in electrical equipment 
- Class "D" - Involves flammable & combustible metals 
- Class "K" - Involves a fire in a commercial cooking appliance. 

Types of Portable Fire Extinguishers	Class A	Class B	Class C	Class D	Class K
ABC Dry Chemical (Most Common)	X	X	X		
BC Dry Chemical		X	X		
CO2 (Carbon Dioxide)		X	X		
Pressurized Water Mist	X		X		
Wet Chemical					X
Dry Power				X	
<i>CleanGuard</i> (Halon Replacement)					

Procedure  
Revision : 2

# FIRE EXTINGUISHERS


Origin Date : 3/15/2010  
Revision Date : 3/31/2016



CO2 Fire Extinguisher  
For BC Fires

ABC and BC  
Dry Chemical  
Fire  
Extinguishers


Note Horn



**A** • TRASH  
• WOOD  
• PAPER

**B** • LIQUIDS  
• GASES  
• SOLVENTS

**C** • ELECTRICAL  
EQUIPMENT



ABC and BC Fire  
Extinguishers will have  
these pictograms



Class A Water Mist  
Fire Extinguisher



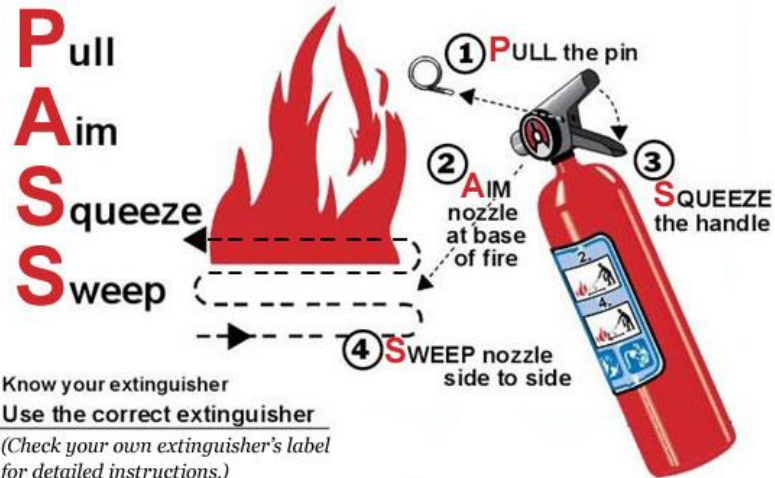
Class K Wet Chemical  
Fire Extinguisher



Class D Dry Powder  
Fire Extinguisher

**FIRE EXTINGUISHERS**

## OPERATION OF A PORTABLE FIRE EXTINGUISHER

**To operate an extinguisher:****PASS**

- **P**ull and **TWIST** the pin from the extinguisher handle
- **A**im the hose or nozzle at the base of the fire
- **S**queeze the handle of the extinguisher together
- **S**weep the extinguishing agent at the base of the fire

**NOTE:** Any time an employee utilizes a fire extinguisher; they must always have an exit/escape from the situation at their back. If a fire extinguisher is utilized in or around a University building, the operator must report the incident as a fire to 911 as soon as possible.

## RELATED DOCUMENTS:

Cleanup of ABC Discharges Guidance